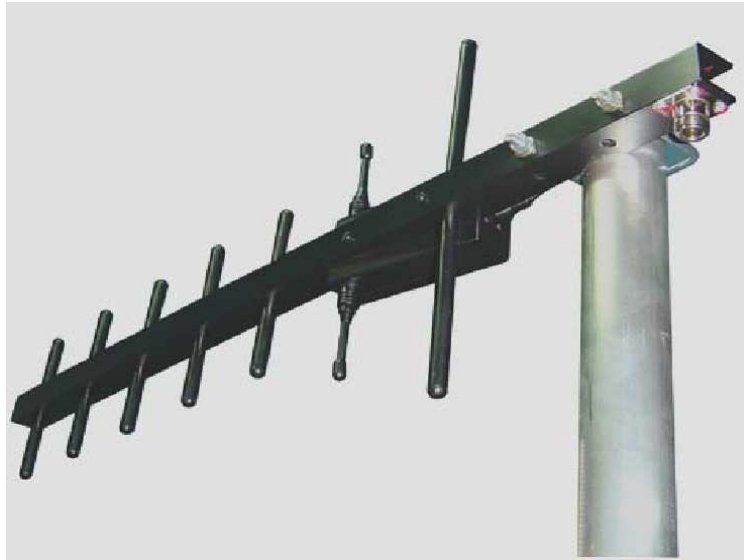


Directional antenna

BSY 868



The antenna designed for a base installation, in telecommunication networks to increase the range of radio modems operating at the band of 868 MHz. A duraluminum construction is powder painting and DC-grounded makes it resistant to environmental conditions with a special consideration of mountain installations, hard-available high masts, maintenance-free systems, etc.

The BSY antennas may be used in antenna arrays of two or more antennas connected with power dividers or radioline to transfer data to higher distance.

ELECTRICAL

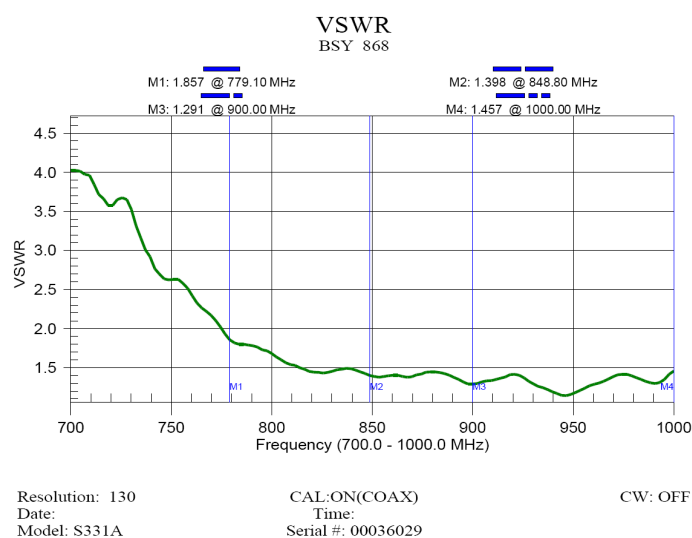
Gain	12.0 dB
Radiation pattern	directional
Impedance	50 Ω
Antenna type	YAGI
VSWR	$\leq 1,3$
Maximum power	500 W
Bandwidth	150 MHz

MECHANICAL

Connector type	N, 7/16
Material	Aluminum PA 38
Polarization	vertical
Diameter of mounting mast	40-80 mm
Weight	1.2 kg
Lightning protection	Galvanic at the antenna corpus
Total length	660.0 mm
Warranty period	2 years
Packaging	Carton box
Wind speed	45 m/s

CLIMATIC CONDITIONS

Temperature range	-40°C ÷ +70°C
Humidity	$\leq 100\%$ at +40°C



VSWR



P.U.P. Net-Com

41-902 Bytom, ul. Piekarska 102/7
tel./fax (32) 282-68-21, 0601-22-08-97
www.net-com.bytom.pl e-mail: biuro@net-com.bytom.pl

P.U.P. NET-COM 2008
wszelkie prawa zastrzeżone