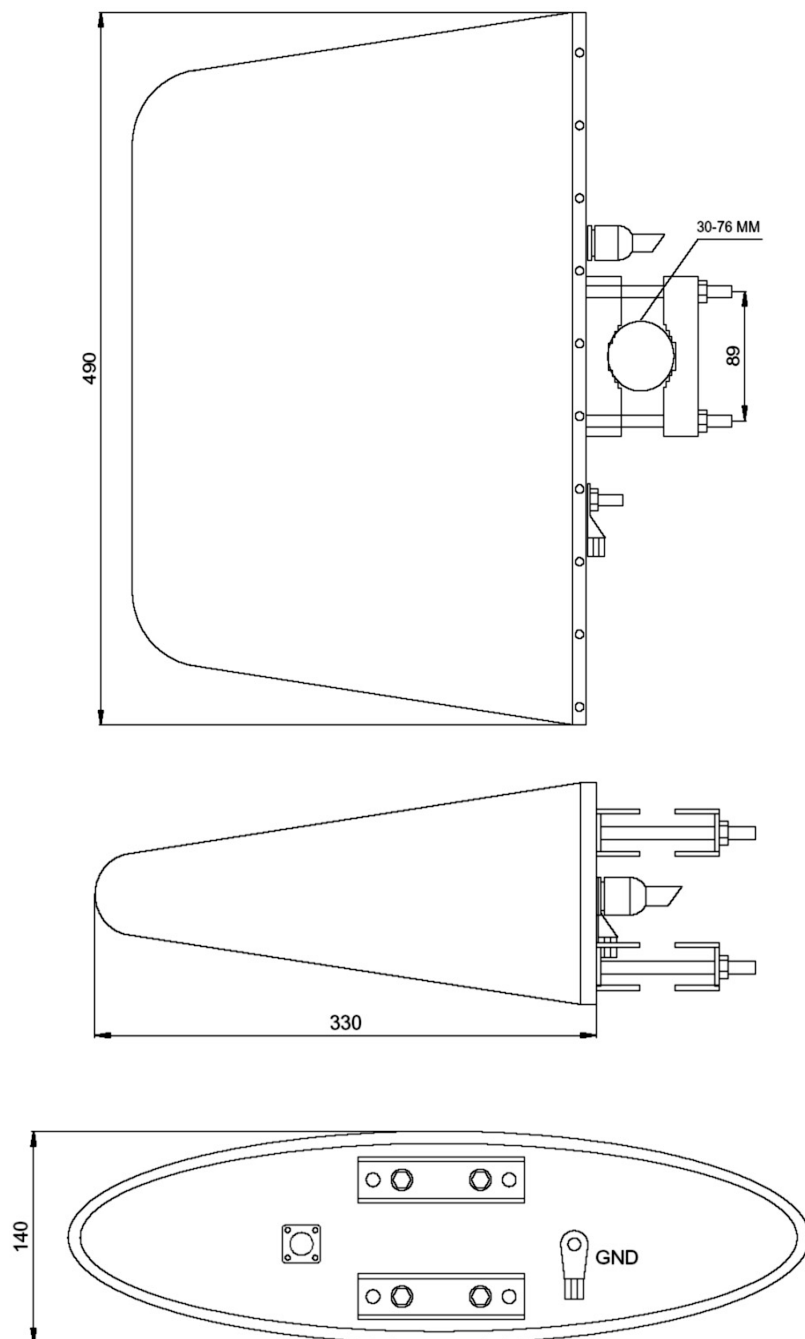
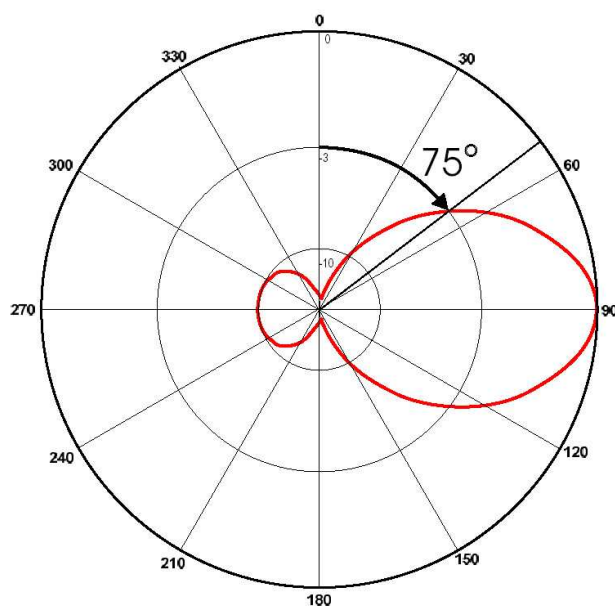


ILS Glide Path Monitor Antenna ATC ML300

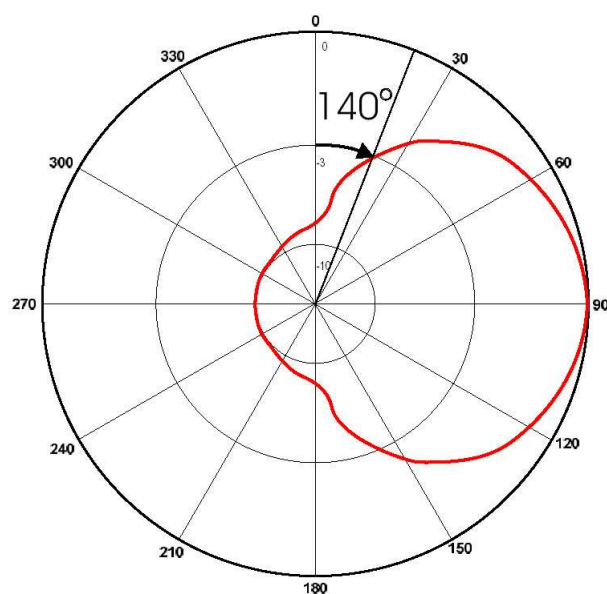


The antenna operating in the monitoring systems of ILS devices. Radiators and reflector screen are made of heavy duty aluminum. The antenna is enclosed in a fiberglass radome. The impact resistant radome keeps the electrical characteristics even under heaviest icing. Waterproof construction and careful material selection ensure long dependable service in all environments. All metal parts are DC-grounded.

ELECTRICAL	
Gain (ref. to $\lambda/2$ dipole)	4.5 dB
Front/back ratio	10 dB
Radiation pattern	directional
Impedance	50 Ω
VSWR	$\leq 1,5$
Maximum power	60 W
Bandwidth	8 MHz
Frequency range	328-336MHz
Horizontal radiation pattern code (E-plane)	037EB30 (CEPT Recommendation T/R 25-08)
Vertical radiation pattern code (H-plane)	070EB25 (CEPT Recommendation T/R 25-08)
MECHANICAL	
Connector	N female
Material, colour	Aluminium, fiberglass, polyurethane lacquer, white
Polarization	Horizontal
Diameter of mounting mast	30-76mm
Weight	5 kg
Lightning protection	All metal parts are DC-grounded
Height/width/depth	330 / 490.5 / 140 mm
Warranty period	3 years
Packaging	Carton box
Wind speed	60 m/s
CLIMATIC CONDITIONS	
Temperature range	-55°C ÷ +60°C
Humidity	$\leq 100\%$ at +40°C



Horizontal radiation pattern



Vertical radiation pattern



P.U.P. Net-Com

41-902 Bytom, ul. Piekarska 102/7

tel./fax (32) 282-68-21, 0601-22-08-97

www.net-com.bytom.pl e-mail : biuro@net-com.bytom.pl