

ATC S15

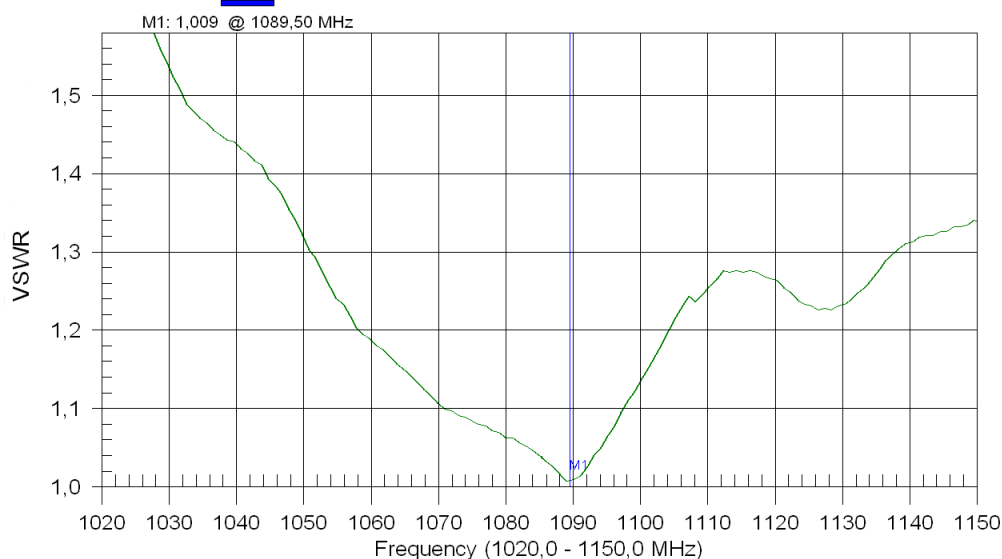
IFF/ ADS 1000- 1200 MHz



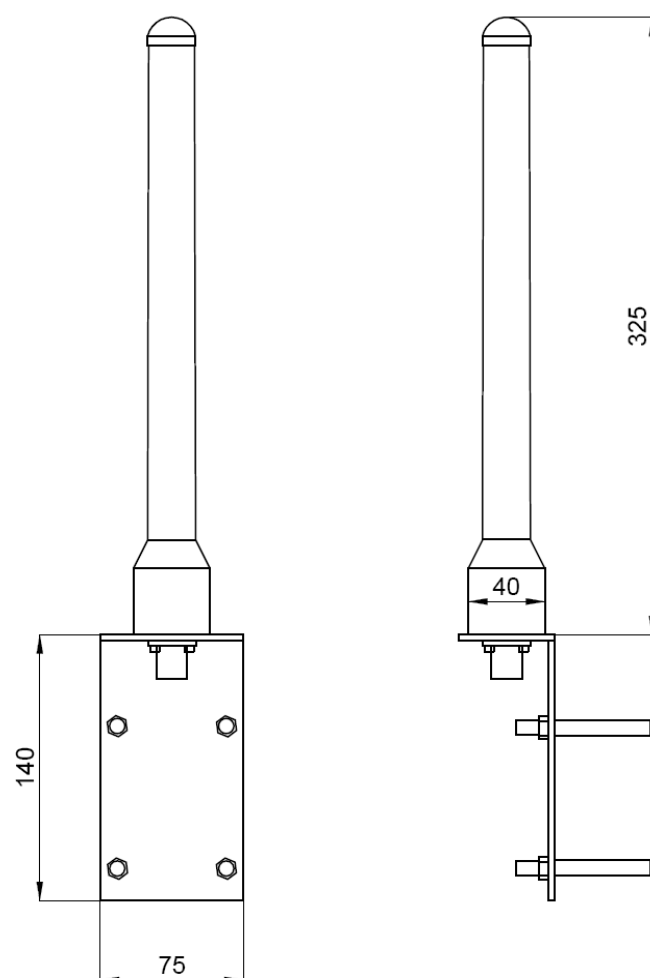
The antenna is designed for cooperate with ADS-B receivers, IFF systems and other radio navigation systems operating in a band of 1000- 1200 MHz. The antenna can be mounted on a typical diameter masts. Waterproof construction ensures long dependable service in all environments. The antenna is DC-grounded and requires additional lightning rod only in peak locations.

ELECTRICAL	
Gain	2,15 dBi
Radiation pattern	omnidirectional
Impedance	50 Ω
Antenna type	dipole
VSWR	$\leq 1,2$
Frequency range	1030 – 1250 MHz
Bandwidth	220 MHz
Maximum power	100 W
MECHANICAL	
Connector	N
Material	Aluminum , fiberglass cover
Polarization	vertical
Total weight	0,55 kg
Lightning protection	DC-grounded on a mounting corps
Total dimensions (diameter/length)	40/325 mm
Packaging	Carton box
Warranty period	2 years
Wind speed	120 km/h
CLIMATIC CONDITIONS	
Temperature range	-40°C ÷ +70°C
Humidity	$\leq 100\%$ at +40°C

VSWR
ATC S15



VSWR



Total dimensions of the ATC S15



P.U.P. Net-Com

41-902 Bytom, ul. Piekarska 102/7
tel./fax (32) 282-68-21, 0601-22-08-97

www.net-com.bytom.pl e-mail : biuro@net-com.bytom.pl